

# Richtsberg

## We meet at Richtsberg!

“City Lab Richtsberg” is looking back and offering first answers to the question:  
“How do we intend to live at Richtsberg?”

For one year now, Richtsberg, a district of Marburg, and its way of life has been studied commonly and creatively. In collaboration with Richtsberg residents, local organisations as well as artists, various ideas were compiled, discussed and realized, resulting in a colourful mixture of works of art, project teams and activities.

All parties involved invite the public to become acquainted with Richtsberg and its people along with an exhibition as well as an extensive accompanying program about “City Lab Richtsberg”.

Said project of Universitätsstadt Marburg was developed under the leadership of the administrative department of civic participation in cooperation with the special service department in charge of culture. “City Lab Richtsberg” aims at creating and helping shape a liveable neighbourhood by encouraging multicultural exchanges and including all age groups.

## Richtsberg as Showroom

Results and achievements obtained by the “City Lab” are exhibited all over the area. Sometimes where they were conceived, sometimes where they were realized, sometimes in a completely different place but always at important or superb sites of the quarter. Thus, the exhibition showcases the “City Lab” as well as Richtsberg itself with its great sites.

## Center Upper Richtsberg

Starting point is the top of Richtsberg. Spread around Christa-Czempiel-Platz you will find the center of the City Lab exhibition giving you a complete overview of the exhibition, its development process as well as its individual components the so-called laboratories.

It's ideal for getting a general overview and to explore the City Lab as a whole.

Come along - all of you!

## Routes across Richtsberg and through the exhibition

Spread across the whole area, the outputs of the respective laboratories are presented and invite you to participate. Along five routes you will find works of art, documentations, and opportunities for participation. Those routes connect different exhibition venues offering you the opportunity to explore the district and its various sites.

## Active participation in the exhibition

Continuation of City Lab: All visitors are invited to take part in speaking, discovering and experiencing. Richtsberg will continue with its diverse exhibition program lasting throughout October along with an open stage, theater and choir performances, workshops and other options. Various stations spread across the exhibition give you an opportunity to play an active part and voice your opinion.

You are warmly welcome whether as spectator, idea generator or participant.

## Co-Creation

Along the lines of co-creation, we will connect you with Marburg's creative scene. There are several possibilities such as graffiti, joining a choir, play acting, stage show or telling your own story. You can still join various projects no matter if you find time by yourself or together with a group. Simply contact us!

## Co-Discovering

Along the lines of co-discovering we invite you to discover recently created works of art and documentary photos taken by Marburg artists exhibited all over the district. What kind of art works fascinate you most of all? Sculptures, canvas, screen printing or photos? Have fun with your personal discovery tour!

## Voicing your opinion

Along the lines of voicing your opinion you can have a say in different matters. Our projects touch important topics concerning the neighbourhood. For example, with your help we collect garbage, discuss mobility issues or think about green spaces. If you think an important issue is missing, let us know!

Stadtlabor Richtsberg Map

Find your way around Richtsberg

### 1 Top of Richtsberg

Lower to Upper Richtsberg

Along this route you cross various sites of the district. From lower marketplace you pass Drachenspielplatz right up to the top where you have a spectacular view over Marburg; finally you reach busy Christa-Czempiel-Platz.

- Lower market place
- Dragon playground
- Forest
- Balloon house
- Giraffe house
- Christa-Czempiel-Platz

🚲 Length 1.4 km

Starting at the foot of the hill  
H Friedrich-Ebert-Straße

Starting from the top  
H Christa-Czempiel-Platz

WC Rest: Café am Berg

### 2 Loop trail Badestube

Explore green oases and the history of Badestube

Discover the eastern part of Richtsberg and its history. Hidden places, colorful murals, nameless bridges and the settlers' community Marburg e.V. are waiting for you. Start and finish your trail at Christa-Czempiel-Platz.

- Christa-Czempiel-Platz
- Thomaskirche
- Mural
- Residents' Association Badestube
- Multi-generational playground
- Sports field in green environment
- Christa-Czempiel-Platz

🚲 Length 1.8 km

Start  
H Sonnenblickallee

Optional return  
H Pommernweg

WC Rest: Christa-Czempiel-Platz

### 3 Loop trail Upper Richtsberg

Town, countryside, giraffe – are there giraffes at Richtsberg?

Starting point Rainbow Bridge, across the top, past the schools to the intercultural gardens and back again. City life interchanges with quiet green sites, in between you find the giraffe- and the balloon house.

- Christa-Czempiel-Platz
- Richtsberg Comprehensive School
- Forest with fitness trail
- Interkulturelle Gärten
- Health Garden
- Football field
- Balloon- and giraffe house
- Christa-Czempiel-Platz

🚲 Length 2.5 km

Start  
H Christa-Czempiel-Platz

Optional return  
H Leipziger Strasse

WC Rest: Picnic Health Garden

### 4 Loop trail Lower Richtsberg

Urban space as meeting point

Oases, stages, and piazza. There are many surprises at Lower Richtsberg. BSF has been operating for 50 years in this part of town; the garage yard that is still providing space for cultural events and experiments, the lower market place with shopping facilities, restaurants and a boxing club.

- Lower market place
- BSF playground and football field
- Garage yard
- Lower market place

Explore Richtsberg

🚲 Length 1 km

Start  
H Friedrich-Ebert-Straße

WC Rest: Lower market place

### 5 Loop trail Richtsberg

Green Richtsberg Hiking in town

Take your time and hike in the natural surroundings of Richtsberg. Start at lower market place, cross Vitos premises and intercultural gardens enter the forest and circle the whole of Richtsberg.

- BSF
- Paffengrundbach
- Sports ground among green fields
- Brook
- Intercultural gardens
- Health garden
- Vitos premises
- BSF

🚲 Length 4.9 km  
It's also great for biking!

Possible starting points:

- H Chr.-Wolff-Haus
- H Potsdamer Straße/ In der Badestube
- H Rollwiesenweg

WC Rest: Health gardens and lower market place

## Mixed program 30.09. – 31.10.2023

Opening festival of the exhibition is Saturday 30.09 at 14:00 h. Live performances, workshops and theme-related walks across Richtsberg are waiting for you.

Contact persons are available from Thursday till Saturday, 14:00 – 18:00.

Throughout October there will be a colourful, mixed program; please find details in the program: [www.marburgmachtmit.de/stadtlaborrichtsberg/programm](http://www.marburgmachtmit.de/stadtlaborrichtsberg/programm)

Café  
Choir  
Theater  
Art  
Walks  
Workshop



[www.marburgmachtmit.de](http://www.marburgmachtmit.de)

Stadtlabor

Exhibition

Richtsberg

30.09. – 31.10.2023

Would you like to participate?  
Do you have any innovative suggestions/ideas for the City Lab?

Contact  
Stadtlabor Richtsberg  
Rebecca Richter  
Stabsstelle Bürger\*innenbeteiligung  
Telefon: +49 176 17913155  
[rebecca.richter@marburg-stadt.de](mailto:rebecca.richter@marburg-stadt.de)



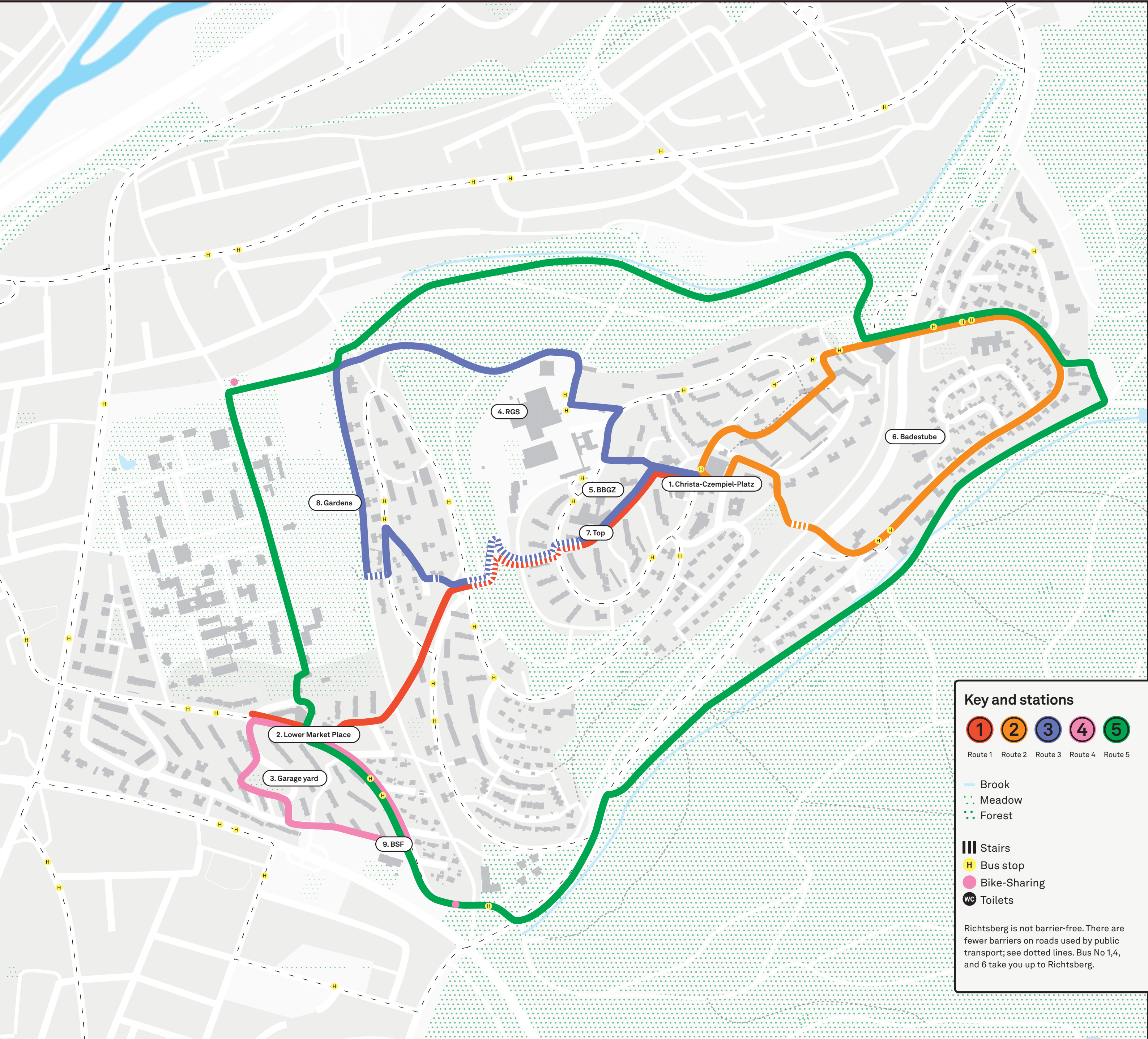
The map in English

Imprint  
© 2023 social.form  
Projektentwicklung, Raum & Aktion  
Rundeturmstr. 16  
64283 Darmstadt  
[www.socialform.de](http://www.socialform.de)

Design: Paul Jürgens  
Map: Dr. Lutz Münzer  
Editors: Galerie JPG, social.form

Publisher  
Magistrat der Universitätsstadt Marburg  
Stabsstelle 72 Bürger\*innenbeteiligung  
Dr. Griet Newiger-Addy  
Rathaus Markt 7  
35037 Marburg  
[www.marburgmachtmit.de](http://www.marburgmachtmit.de)





1. Christa-Czempiel-Platz

WC

i

Entrance and center: here you find all information about the exhibition as well as an overview of the City Lab and its components.

  - Entrance to exhibition
  - Stadtlabor Center
  - Experimental culture
  - Showcase neighborhood
  - Storytelling
  - Telling personal stories / Screen print/ Portraits
  - Participation in mobility project Richtsberg
  - Graffiti project
2. Lower Market Place

WC

i

Small gestures make a change to a site. Discover what's behind it!

  - Funny sights – photos Chris Schmetz
  - Participation – What's the name of this place?
3. Garage yard

Minecraft, map for play- and sports grounds; temporary site for cultural activities

  - Play-acting facilities
  - Participation – Garage yard and Richtsberg a green location
  - Digital Richtsberg
  - Lucky Punch – acoustic space
4. RGS

Introduction of the school – the school yard turns into an open-air museum

  - Future projects of RGS
  - Streetart-Museum
5. BBGZ

The cafe on the hill turns into a location for exhibitions and events

  - Workshop with Dmitrij Schurbin
  - Presentation of results
6. Badestube

Gain insight into the history of Badestube and experience play-acting and choir at SBM clubhouse.

  - Settler association Badestube e.V
  - historical photographs.
  - Play-acting Richtsberg
  - Story telling – personal stories
  - Participation – What's the name of this bicycle bridge?
  - Participation – What's the name of this car bridge?
7. Top

Photos of Richtsberg, murals and a dialogue with the castle

  - Schäfer's photo pasteboard – photos by Helmut Schäfer
  - Participation -What's the name of this path?
  - View
8. Gardens

WC

i

Health garden as well as intercultural gardens makes up a flowering green oasis inviting you to linger.

  - Timeless Richtsberg – photos by Susanne Saker
9. BSF

Explore BSF with its various exhibitions, information about the institution as well as its outdoor facilities

  - Rap in the boxing ring
  - Graffiti project
  - Digital Richtsberg
  - Lucky Punch – boxing sculpture
- Key and stations

1

Route 1

2

Route 2

3

Route 3

4

Route 4

5

Route 5

—

 Brook

...

 Meadow

...

 Forest

|||

 Stairs

H

 Bus stop

P

 Bike-Sharing

WC

 Toilets

Richtsberg is not barrier-free. There are fewer barriers on roads used by public transport; see dotted lines. Bus No 1,4, and 6 take you up to Richtsberg.